

TRUSTEE RECRUITMENT PROSPECTUS



Foundation for
Jewish Heritage



WELSH JEWISH
CULTURAL CENTRE

CANOLFAN DDIWYLLIANNOL
IDDEWIG CYMRU

Discovering and celebrating
Welsh Jewish history, heritage,
culture and contribution

INTRODUCTION

We are seeking Trustees for a charitable organisation established to lead the exciting redevelopment of the historic synagogue in Merthyr Tydfil, a project of national importance to Wales. Trustees will help bring new thinking, views, skills and experience to the project.

The Grade II listed synagogue is among the most important Jewish sites in Wales and the first purpose-built synagogue for a Jewish community, part of a wave of migration, drawn to Merthyr Tydfil when it was Wales' largest town and a powerhouse of the Industrial Revolution.

The building has had varied uses, but over the past twenty years it has declined and is now derelict. Now – led by the Foundation for Jewish Heritage and with support from Natonal Lottery Heritage Fund, Merthyr Tydfil County Borough Council and the Welsh Government (Cadw) – there are plans to restore the synagogue as a community asset, and to make a new Welsh Jewish Cultural Centre a reality.

The project is at a pivotal point. With project planning nearly complete, we will soon move into the delivery phase. We need to get the right people on board as trustees of the new organisation that will lead the project delivery and be responsible for the operation of the new Centre.



We are particularly interested in receiving applications from people with strong local knowledge and/or Wales-wide perspective, who have the following skills and experience:

- Commercial and business development, particularly operational start-ups
- Cultural venue and/or cultural or educational programming leadership
- Financial and business planning
- Fundraising and income generation
- Charity governance
- Strong relevant stakeholder networks and influence, particularly in Merthyr Tydfil and/or across Wales.

We're looking for people with a passion for Jewish history, heritage and culture, and a commitment to getting the Welsh Jewish Cultural Centre up and running. We need people who are able to bring energy and commitment, take a proactive part in our board discussions, engage in healthy debate, respect others' viewpoints and then gather around to support a consensus view.

If you think you've got the skills, experience and personal qualities to support us in taking our next vital step, we would be delighted to hear from you.



THE WELSH JEWISH CULTURAL CENTRE

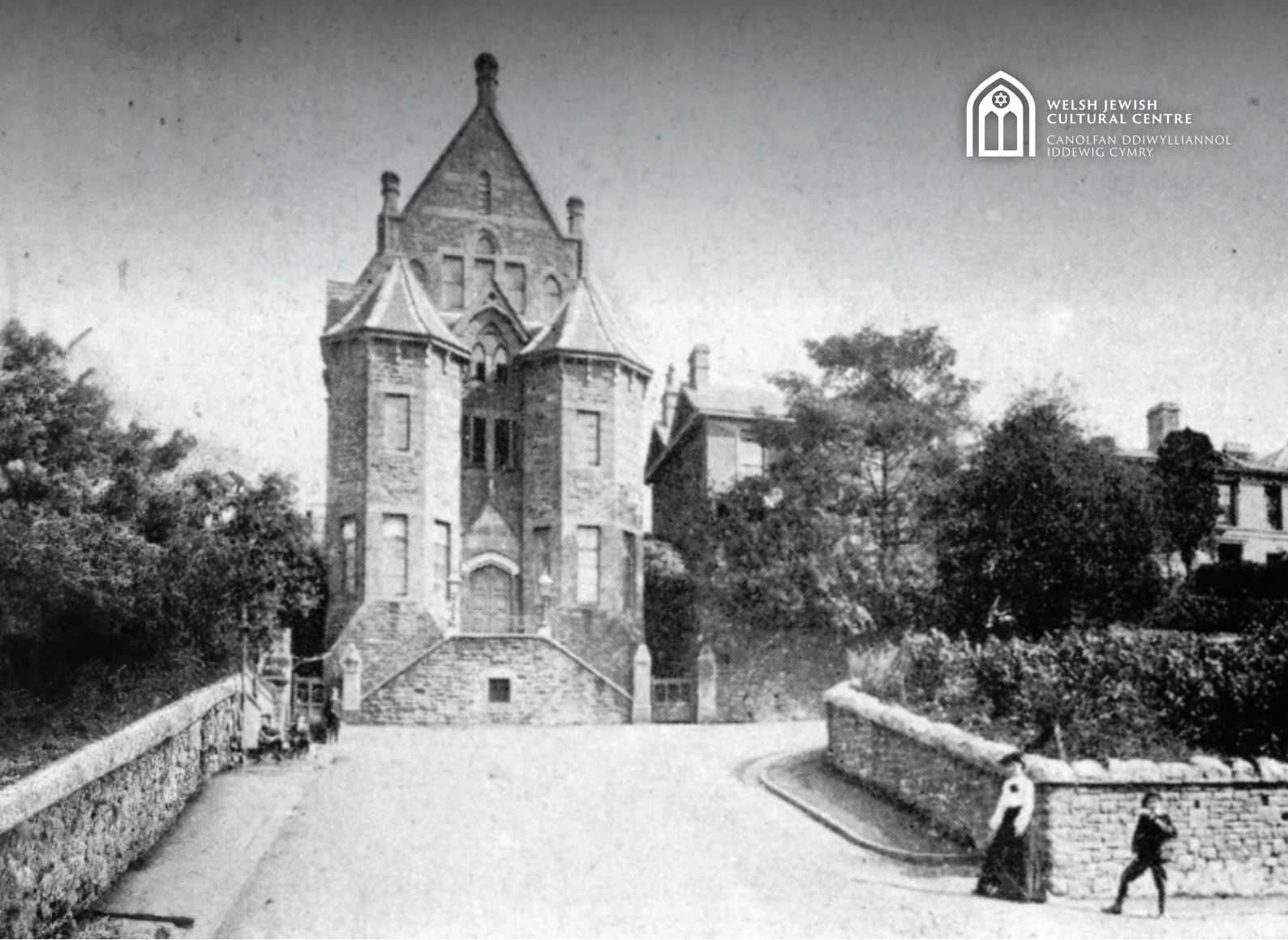
The aim of the project is to create a venue in Merthyr Tydfil that meets the needs and expectations of both the local community and visitors, and which works across Wales (and beyond) to promote Welsh Jewish culture, stories and experience.

It will inform and inspire, providing opportunities for learning and engagement through a programme that explores the history of the synagogue, Judaism and Jewish culture, Welsh Jewish history, the Holocaust, and contemporary themes relating to respect, tolerance and inclusion. It is vital that we have a good range of skills, experiences and voices on the Board if we are to meet this aim.



The Welsh Jewish Cultural Centre will:

- Provide a first-class visitor experience that showcases the history of the building and stories relating to the Welsh Jewish history and the experience of the Jewish population in Merthyr Tydfil and across Wales.
- Provide research and digital archive facilities that collate the stories of Welsh Jewish history and make this information available as a digital resource.
- Promote opportunities for learning and education, both in-house and through an outreach programme for schools and special interest groups.
- Engage with other minority and refugee communities, promoting cross-cultural dialogue and social inclusion.
- Provide high-quality spaces to host music, touring exhibitions, lectures, community activities and cultural events.
- Create working partnerships with museums, heritage sites, cultural centres and other faith and minority organisations across Wales and the UK, based on common experiences and shared values.
- Support the development of a Welsh Heritage Jewish Trail that links sites of historic interest across Wales from North to South, and which promotes understanding of Welsh Jewish history.



WHAT DOES BEING A TRUSTEE INVOLVE?

Trustees of the Welsh Jewish Cultural Centre will have a shared responsibility for the establishment of the organisation and subsequently, effective governance.

Being a Trustee is about helping to make sure that the charity is managed and run responsibly, in line with the charity's objectives and for the benefit of residents, visitors and the public at large. These are hugely valued positions, and trustees will play a crucial part in the success and development of the new Centre.

In line with the Charity Governance Code, the trustee role is primarily focused on strategy, oversight and supportive challenge, providing strong leadership for the organisation and being positive ambassadors to drive its future direction. There will be paid roles within the organisation to manage the day-to-day operations and to report to the Board of Trustees.

The Charity Commission document, 'The Essential Trustee', sets out the key duties of Trustees in more detail.



The trustees of the new organisation will receive plenty of support as the Welsh Jewish Cultural Centre takes shape and during the early years. The consultant team who have worked on the plans will continue to provide support and there are funds to assist with board development, such as training workshops and visits to similar organisations.

All trustees will be required to sign a Code of Conduct. This role is not remunerated, but reasonable expenses will be paid.



What aptitudes and representation are we seeking in our Trustees?

We need passionate advocates for Welsh Jewish heritage, history and culture.

We are looking for people who can commit the time to support us at this critical juncture, and who have the energy and enthusiasm to help us grasp opportunities, connect us with new partners and help shape new futures. We need strategic thinkers – able to see the ‘big picture’, but equally happy to drill down into the detail when it’s needed.

We need people who will work well as part of our team; people who communicate effectively, listen well, will respect others’ input, and who are able to compromise and get behind a joint decision.

We are committed to seeking broad perspectives on our board. We encourage applications from people of different ages and backgrounds. We are hoping to appoint a mixture of candidates from both Merthyr Tydfil and across Wales as well as further afield.

Application requirements

If you are interested in being considered as a trustee, please apply with the following:

A supporting statement (no more than 2 sides of A4) setting out:

- Why you would like to be a trustee
- What you will bring to the role, with particular reference to our requirements and providing a supporting CV if available
- What you would hope to get from the role
- Contact details for two referees to support your application

Your application should be emailed by to:

enquiries@jewishheritage.wales

Please include ‘WJCC Trustee Application’ as the title in the email when submitting an application.

Prospective candidates may be invited for an initial conversation about the role. Interviews will take place at the end of the application period. All candidates will be contacted whether they are invited for interview or not.

If you have any questions, or would like an informal conversation to discuss the role, please contact Neil Richardson, Project Manager, on enquiries@jewishheritage.wales



WELSH JEWISH
CULTURAL CENTRE
CANOLFAN DDIWYLLIANNOL
IDDEWIG CYMRU



Recruitment timeline:


An on-site visit and discussion with a member of the project team can be arranged.


Closing date: Friday 10 January


Interview Dates: Week commencing 20 January


Appointment: Friday 31 January


Social media

 @welshjewishculturalcentre

 @welshjewishcc

 @welshjewishculturalcentre

 @welsh-jewish-cultural-centre

 jewishheritage.wales



Mewn Partneriaeth â
Llywodraeth Cymru
In Partnership with
Welsh Government





**WELSH JEWISH
CULTURAL CENTRE**

CANOLFAN DDIWYLLIANNOL
IDDEWIG CYMRU

enquiries@jewishheritage.wales